

CONNECTIVITY

IS THE SAFETY NET OF NATURE

What is connectivity?

Connectivity is the degree to which landscapes and seascapes allow species movement and natural ecological processes.



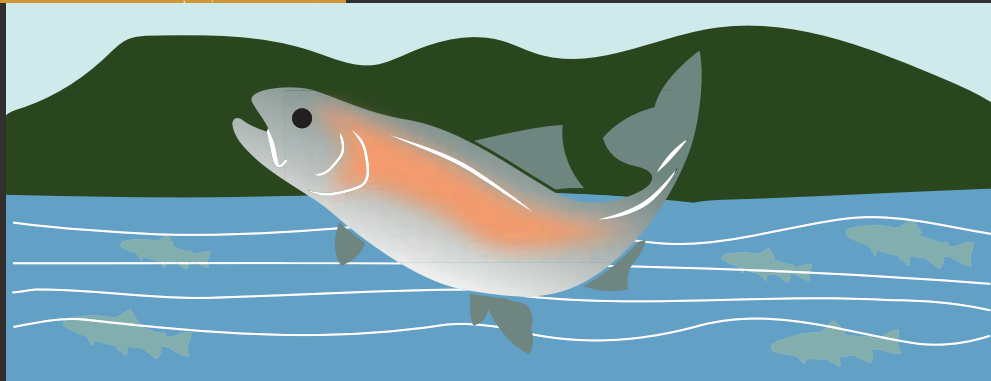
What does connectivity do?

Allows species to migrate or disperse to feed, breed, and respond to climate change. Allows natural communities to thrive by maintaining ecosystem functions like pollination and stream flows.



What do we want?

Connected lands and waters: wildlife corridors, landscape linkage areas, free flowing and connected rivers, interconnected coastal and marine zones, and climate-resilient ecosystems.



Why do we care?

Connected lands and waters benefit nature and people. As the climate changes and development increases, we must act now to save and restore natural connections across all lands and waters.



WCPA
WORLD COMMISSION
ON PROTECTED AREAS



LEARN MORE:
conservationcorridor.org/ccsg