



MACEDONIA DEVELOPMENT GROUP

(Improved life of dignity for most vulnerable Children and youth)

Funding Proposal to IUCN to Support Rural School Feeding Project for Local Schools in Mkundi, Morogoro Tanzania

Nov 15, 2019

Dr. Innocent Mathias Busindeli

Lecturer at Sokoine University of Agriculture

Morogoro, Tanzania

Subject: Funding Proposal for School Feeding Project in rural Morogoro

Dear IUCN,

Please find the attached funding proposal for school feeding project.

School feeding program as a social safety net has been popular in developing countries as an instrument for achieving the Millennium Development Goals (MDG) Importantly, this project assists to achieve higher school enrollment and attendance rate of students in primary schools, provide better nutrition fortified meals to children and help local government to achieve desired outcomes in educational and policy level.

The nominee Macedonia Development Group (MDG) has been working in Morogoro Tanzania since 2013 with aim to improve lives of rural poor children and ensure their

education in general. In this regard the nominee is planning to initiate school feeding project at a small village in northern part of Morogoro named Mkundi. Main objective of the nominee's project is to provide morning meal to students from selected 3 schools of this locality for next one academic year. Approximately total 3300 students will be reached under this project.

The nominee's estimated budget is \$409,900 USD what is required to run this proposed project including all financial expenditure.

Moreover, the nominee is also working to improve the education facilities of schools in rural Morogoro 'Room to Read' is one of the nominee's major funding bodies which will provide necessary financial and technical assistance on purchasing educational accessories for schools. The nominee believes that this project will change lives of poor school students who have to attend class in empty stomach always.

The nominee will highly appreciate if IUCN funding committee awards our proposal.

Enclosure: Project Funding Proposal

Executive Summary

After establishment in 2013, the nominee has started working on education and child development issues across Morogoro. In the first five years the nominee reached 4 districts and over 20,000 thousand people around the country were directly benefitted under his various developmental activities. For further on how the nominee Stephen Kashinde works hard to benefit the community see his video link provided (07:24 minutes):

<https://www.youtube.com/watch?v=3h-HoZWj8mo> the nominee concentrates on poor and neediest children in the community so that they can have opportunity to live, educate and give back to community in near future. Also see another <https://youtu.be/XkuuM2twwtQ>

Mkundi is a small village under Morogoro district in Kihonda ward, Morogoro. Mkundi is considered one of the poorest villages in this district where over 70% people live under poverty line whose income is less than \$1 per day. The nominee has been working very closely with local schools and students in this region for 5 years and constantly trying to improve the condition of literacy among school going children.

It is a project targeted to provide meals or snacks at school to reduce children's hunger during the school day. Usually this type of programme is designed for increasing the time children spend at school, improving certain cognitive functions and improving nutritional status of children. This programme provides snacks to school going children. Students are provided with breakfast, mid-morning, lunch or combination to alleviate short-term hunger, increase attention span, facilitate learning, and obviate the need for children to leave the school to find food. Good health will help a child to receive good education and improved education also ensures healthy status of children this programme will definitely attract girls to schools and parents will be interested to send their daughters to school.

The nominee has skilled and trained employees and adequate resources to carry out the project in proposed region successfully. Moreover, the nominee has strong grass root level networks with local NGOs, CBOs and other institutions and influential persons in that area who can assist him hugely in successful operation of this project.

The nominee hopes IUCN will support his cause and assist him to continue with this project for ensuring quality education and health for children in community of Morogoro Tanzania.

Contents

Project Summary:

- The Problem
- Project Goal
- Project Objectives
- Beneficiaries
- Requested Budget Information

Implementation Strategy:

Sustainability:

Administrative and Financial Management:

Risks and Assumptions

Monitoring

Evaluation

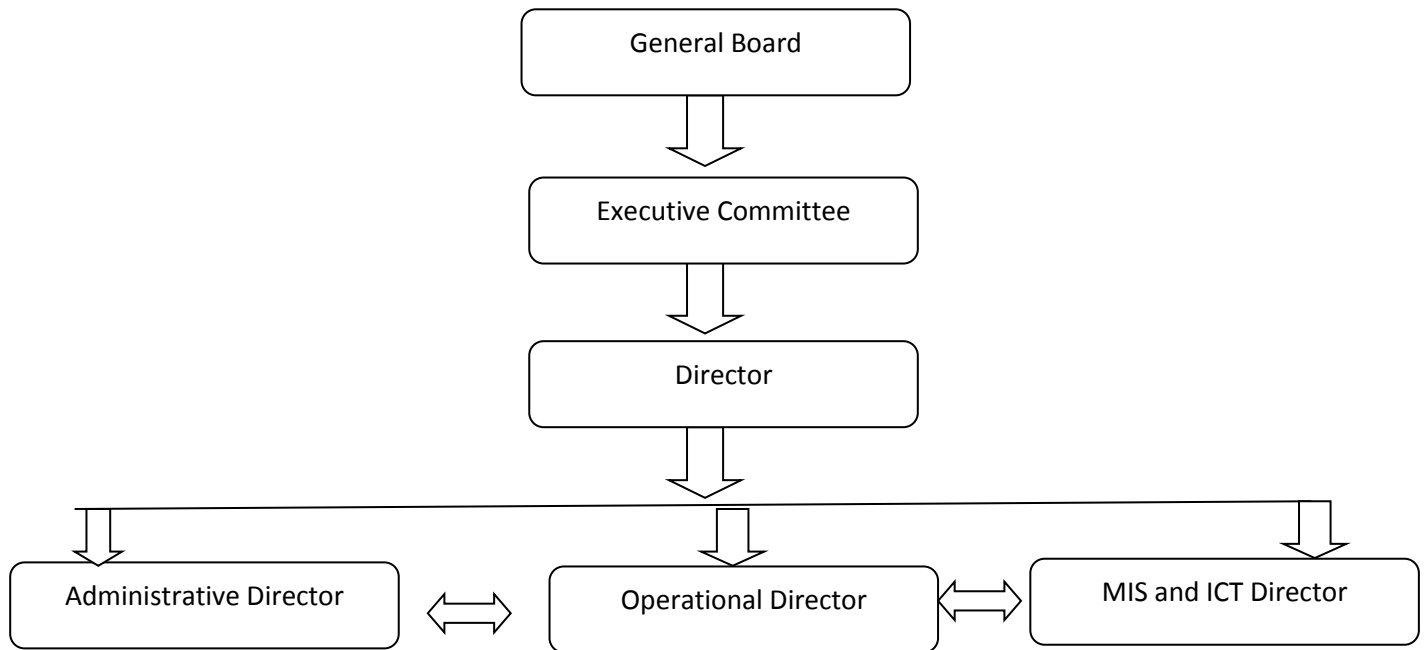
Conclusion

1. **Background of the Project :**

The project was established in 2013 in Mkundi, Morogoro. Since then the nominee has been working in grass root community level in 5 districts across the country. The nominee mainly works for the national government projects to deliver timely and effective project operations. Among various initiatives, the nominee has special emphasize on:

Child development: pre-school facility, primary and secondary school facility, help poor students to continue their education.

Currently the nominee runs 3 projects in various districts across the country. The nominee has strong administrative framework that conduct projects operation with the help of local employees.



1.b) Area for Proposed School Feeding Project:

Morogoro is a town with a population of 315,866 (2012 census) in the eastern part of [Tanzania](#), 196 kilometres (122 mi) west of [Dar es Salaam](#), the country's largest city and commercial centre, and 260 kilometres (160 mi) east of [Dodoma](#), the country's capital city. Morogoro is the capital of the [Morogoro Region](#). It is also known informally as "Mji kasoro bahari", which translates as "city short of an ocean/port"

Map of North Morogoro centered at the Dodoma Road



Mkundi map please click on the link below

<https://maps.me/catalog/education/amenity-school/mkundi-primary-school-135928537/>

Overview



[Sisal](#) plantations in the outskirts of Morogoro ([Uluguru Mountains](#) in the background)

Aerial view



Morogoro lies at the base of the [Uluguru Mountains](#) and is a centre of agriculture in the region. The [Sokoine University of Agriculture](#) is based in the city. A number of missions are also located in the city, providing schools and hospitals.

Morogoro is the home of Salim Abdullah, who was the founder of the Cuban Marimba jazz band, and the Morogoro Jazz Band, another well-known band established in 1944. From the mid-1960s to the 1970s, Morogoro was home to one of Tanzania's most influential and celebrated musicians, Mbaraka Mwinshehe, a lead guitarist and singer-songwriter.

Morogoro is home to the Amani Centre, which has helped over 3,400 disabled people in the surrounding villages.

1. Project Description:

2. a) Statement of the Problem:

When the nominee visited various schools in this area and talked with school students and their parents he found that many students come to school without having any breakfast and many of them just have two times meals in a day. Because of extreme poverty and

carelessness to their children parents don't care at all about their children who attend school in empty stomach. This huge number of children goes through physical and mental hardship to acquire quality and standard education due to their hunger and malnutrition. Poverty stricken families can't provide minimum nutritious foods to their children or food with very low nutrition value. Starting a day in empty stomach isn't a healthy sign of good education environment where students can't concentrate on studies due to hunger. Lack of nutrition is resulted in various illnesses to students who become irregular in schools and dropout later before finishing their primary education.

In our proposed area Mkundi Morogoro, many students in rural areas live under poverty lines and their parents fail to provide them necessary food arrangement even three times in a day. Over 62% people living in selected areas earn less than a dollar per day. In the meantime the food prices are doubled and inflation also hits in local economy. Therefore it is becoming more difficult for parents to provide meals three times a day contained basic nutrition. In this context students have to attend class with hunger. This discourages students to join school and a dropout rate is relatively high. Moreover this scenario discourages the girl students to attend school. Furthermore, low income countries are emphasizing on this program to continue their effort to reach their targets of Millennium Development Goals (MDG) by drawing more children to school especially the girl student (The World Bank 2012).

. b) Project Goal:

Providing nutrition fortified breakfast to students from selected schools.

2. c) Project Objectives:

The nominee aims to cover selected 3 primary schools in proposed area where most poverty stricken families live. According to nominee's estimation he has to provide assistance to 3300 students with one morning nutrition fortified meal for next one year.

After analyzing situation the core objectives behind this project are to:

- Improve school enrolment to above 80%, class attendance 70% and decrease dropout rates to 25% in FY 2020.
- Alleviate short term hunger and improvement of health issues of 3300 students providing additional treatment what they need.
- Improve student’s academic performance in school year 2020/2021.
- Contribute to improvement of educational facilities in all 3 schools providing educational accessories
- More girl students will come to attend school because of incentives

2. d) Project Beneficiaries:

Primarily school going poor students are the prime beneficiaries of this project.

Approximately 3300 students will be directly benefitted in this project for 1 academic year.

Local food production will be encouraged to use foods in project what will benefit farmers.

Direct Target	3300 (1750 boys and 1550 girls)
Indirect Target	750 Families (approx.); 8 new employments

2. Case Studies:

A study conducted in Malawi by WFP showed that a small, pilot, school feeding program over a three-month period led to a 5 percent increase in enrollment and up to 36 percent improvement in attendance (WFP 1996). An evaluation of a school meal program in Jamaica found that after the first semester, improved school attendance was visible than other schools (Powell, and Grantham-McGregor 1983). Another evaluation of a school

feeding program in Burkina Faso found that school canteens were associated with increased school enrollment, regular attendance, consistently lower repeater rates, lower dropout rates, and higher success rates on national exams, especially among girls (Moore, and Kunze 1994).

3. Request and Budget Information:

The implementation period extends according to approval of this proposal

Notes:

- Latest exchange rate is 2296 Tshs= \$1 USD on 23rd Oct, 2019
- Age of student ranges from 6- 14 years

✓ Costs of

School Breakfast for 1 year:

247 School days and 3300 students

-Per meal cost for per student= \$.50 cents

- Total cost per day for 3300 students= \$ 1700 USD

- Total cost for 1 academic year (217 school days) = \$368,900 USD

✓ Administrative cost:

- Cook wages, uniforms, fuel, cookware, cleaning supplies, storage, shipping, transportation, etc,= \$23,000

- Salary of a Hired Consultant= 7,000 (1 year contractual appointment)

✓ Total Estimated Amount: \$398900 USD

**Additional Funding= Room to Read will donate total \$ 5,000 USD for providing educational facilities in selected schools where school feeding project will be run.

****The nominee earning for the Project:**

- Local Donations= \$5,000 USD Annually
- Earnings from project garden and farming= \$1,000 USD Annually

<u>Total Funding Requested:</u> \$409,900 USD= 929,653,200 (Tshs)

4. Implementation Strategies:

Under this project 3 schools have been selected from poverty prone areas and the nominee will deliver food to 3300 students once in a day for six days in a week. A committee will be formed to supervise the whole program who will report back to nominee head office in every month. The nominee has local volunteer groups who help him in his various projects. Volunteers will play the significant part in this project. Moreover, a teacher from every school will be requested to join and supervise their own school food project activity voluntarily. Before initiating the project the nominee will have discussion with all the head teachers of selected schools, parents, students and local government agencies asking their full support and assistance regarding this.

Children's meals provided through school feeding project should be prepared and delivered to children in hygienic condition. Whilst classrooms can also serve as dining areas for children, it is important that appropriate food preparation and storage facilities should also be available in schools. If food is prepared offsite then conditions in schools should be adequate to ensure that there is no risk of contamination through dirt or poor sanitation facilities that might affect this. In this regard a kitchen will be set up in every school with regular kitchen utensils for cooking food. Phases of project implementation will be done in order given below:

- Meeting with local residents, targeted beneficiaries, head of selected schools, teachers, local organizations and government officials regarding the projects and present details of it to them.
- Tender to construct kitchen in every schools and initiate procurement procedure to buy foods
- Recruiting a consultant, new cooks and assistants and volunteers for every selected school to deliver the assistance accurately
- Delivering meal in every morning for six days in a week for next one academic year
- Training and awareness raising regarding local food production and distribution so that it can be used in School Feeding Project Programme
- Compilation of financial and administrative documents regarding the project to submit in IUCN
- Providing education materials to selected schools on need basis
- Evaluate the outcomes and impacts achieved so far from the various modalities that have been used in relation to stated educational, gender and nutritional objectives (WFP, 2007: 4).

For the academic year 2020-2021 the nominee will collect students' data using following categories:

- Student attendance
- Performance in class and in exam
- School facilities available in selected schools

Village census, household survey, school survey and community survey will be conducted to gather data (Akhter U Ahemed, 2004:13)

6.a) **Work Plan:**

Sector	Jan	Feb	March	April	May	June	July	Aug	Sep	Oct	Nov	Dec
Hiring consultant,cooks, volunteers	√											
Meeting with local resident, teachers and government official s about progress	√			√				√			√	
Monitoring Report			√			√			√			√
Evaluation Report				√				√				√
Set up Kitchen	√											
Audit Report												√
Training to increase local food production		√			√			√		√		

6. b) Logical Framework:

Objectives	Expected Outcomes	Verifiable Indicators	Means of Verification
Improve school enrolment to above 80%, class attendance 70% and decrease dropout rates to 25% in FY 2020.	More students presence in schools with higher rate of successful school completion	School records showing low enrolment and attendance	School records and data available to local organizations
Alleviate short term hunger and improvement of health issues of 3300 students providing additional treatment what they need.	Improvement of child health and decrease malnutrition and other related diseases	students diagnosed problems due to malnutrition	Records from local hospitals and satellite clinics and local organizations working on health issues
Improve student's academic performance in school year 2020/2021	Improved academic result and cognitive skills necessary for students	Poor results of students in exam and unsatisfactory performance in class	School records of each child
Contribute to improvement of educational facilities in all 3 schools providing educational accessories	Improved educational environment for students for better learning	Poor classrooms and management hampered delivering effective education	School visit and observe the condition of classrooms and over all educational facilities available
More girl student will come to attend school because of incentives	Girl's participation will be increased in schools	Ratio of girl students in rural schools is still relatively low	School record and family interview
Mobilize and build capacities for local government and other organization to conduct such kind of programme to support their local schools and students	Network with other organizations to work and share expertise on this project and involve local government to find more assistance	Less cooperation and coordination between organizations and government agencies hamper to carry out development activities timely	Projects run successfully and more schools and students are being covered under such programme

6.c) Reporting:

An interim and a final report, highlighting progress will be submitted by the nominee to IUCN

6.d) Sustainability:

This project will raise awareness among parents and try to share its resources with other organizations so that all can work together on similar issues with collective fund and expertise to reach more poor students in area. Economic empowerment strategy for community people will work as tool towards sustainability of this project. Along with this project the nominee will also try to increase his project based earnings and donations so that he can continue with this project with his own fund partially. For sustainability of this project the nominee will seek partnership with other organizations like National Ministry of Education and Health, UNICEF, Oxfam, Action Aid, CARE and other national or international aid agencies. This project needs alignment with national framework policy to run it smoothly and needs staff training and capacity building to continue in future (WFP, 2010: 33). Progressive policy change can make this effort beneficial for general people in community (Laginger, 2011: 35).

6.e) Administration and Financial Management:

Administrative department of the nominee will supervise the financial issues accurately and financial report of expenditure will be send to IUCN office on quarterly basis. The nominee always puts emphasize on fair and clear financial correspondence with his funding bodies. IUCN will audit the financial reports on feeding program annually. Standard documentation and accounting procedures will be strictly followed during the project run time.

6. f) Monitoring:

Project monitoring will be conducted by nominee and report will be duly sent to IUCN office to track the status of project.

6. g) Evaluation:

Project evaluation will be done in every four months and report will be sent to nominee and IUCN on outcome and progress of project. Nominee's evaluation and monitoring team will conduct the evaluation under the supervision of an expert on project evaluation.

7. Risks and Assumptions:

7.a) External Factors:

Food price hiking, inflation, economic slowdown, political unrest may affect the project operation in few occasions.

7.b) Security:

The nominee has his own security rules and procedures and he will try to adopt top security measures to ensure smooth project operation.

8. Gender Strategy:

The nominee expects this project will attract more girl students to join school than before.

9. Community Involvement:

Regular meeting will be conducted with parents of children what will make a bridge among the people receiving aid from this project. Awareness and training will include more community people in project. Moreover, success of this project will attract more community people to work together on similar issues for their own development.

10 Conclusion:

This proposed project will directly help poor school going children by providing one meal in a day from schools for the next one academic year. The nominee is truly expecting that he will receive satisfactory improvement in education and health issues among the

students of selected schools and more schools will be covered if more funding will be available for this project. Therefore the nominee is looking forward to supporting his projects financially and helps him to reach to community to make it a better place.